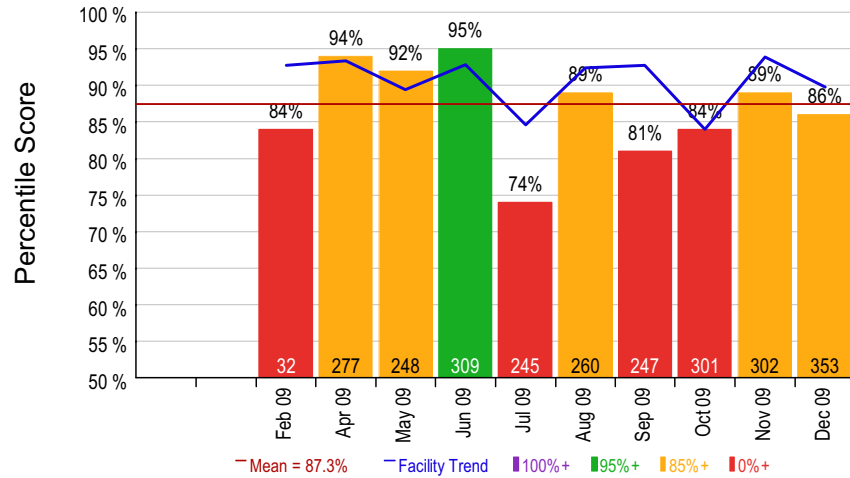


December 2009
Sample Hospital (5110)

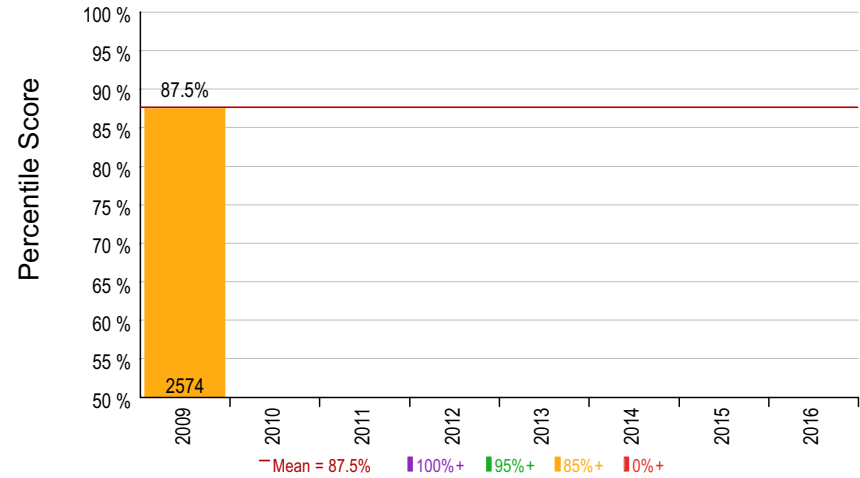


Department Summary December 2009 - 2 North (077)

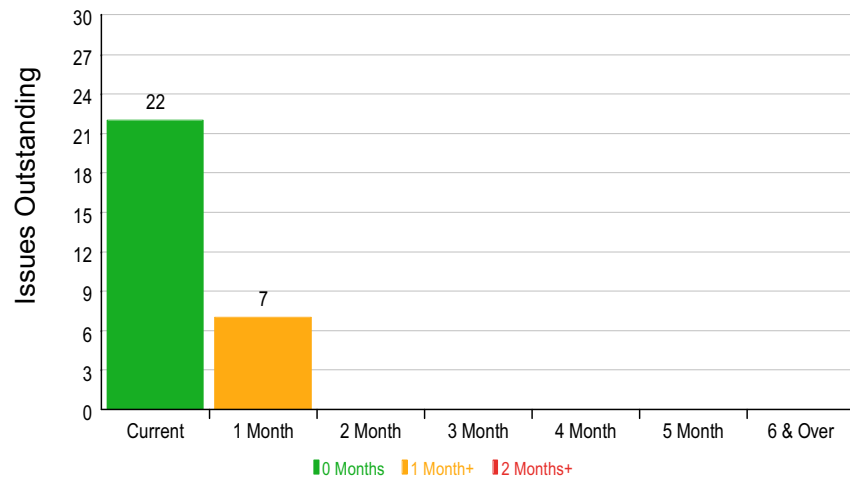
Overall Score - Trend



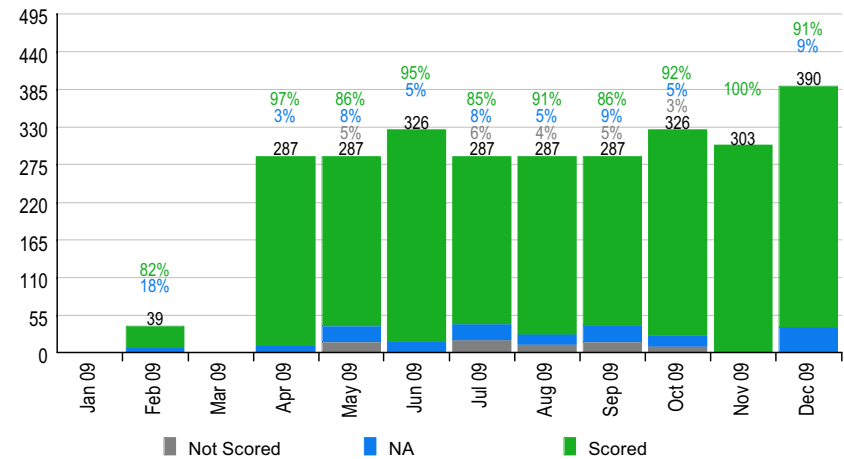
Overall Score - Annual Trend



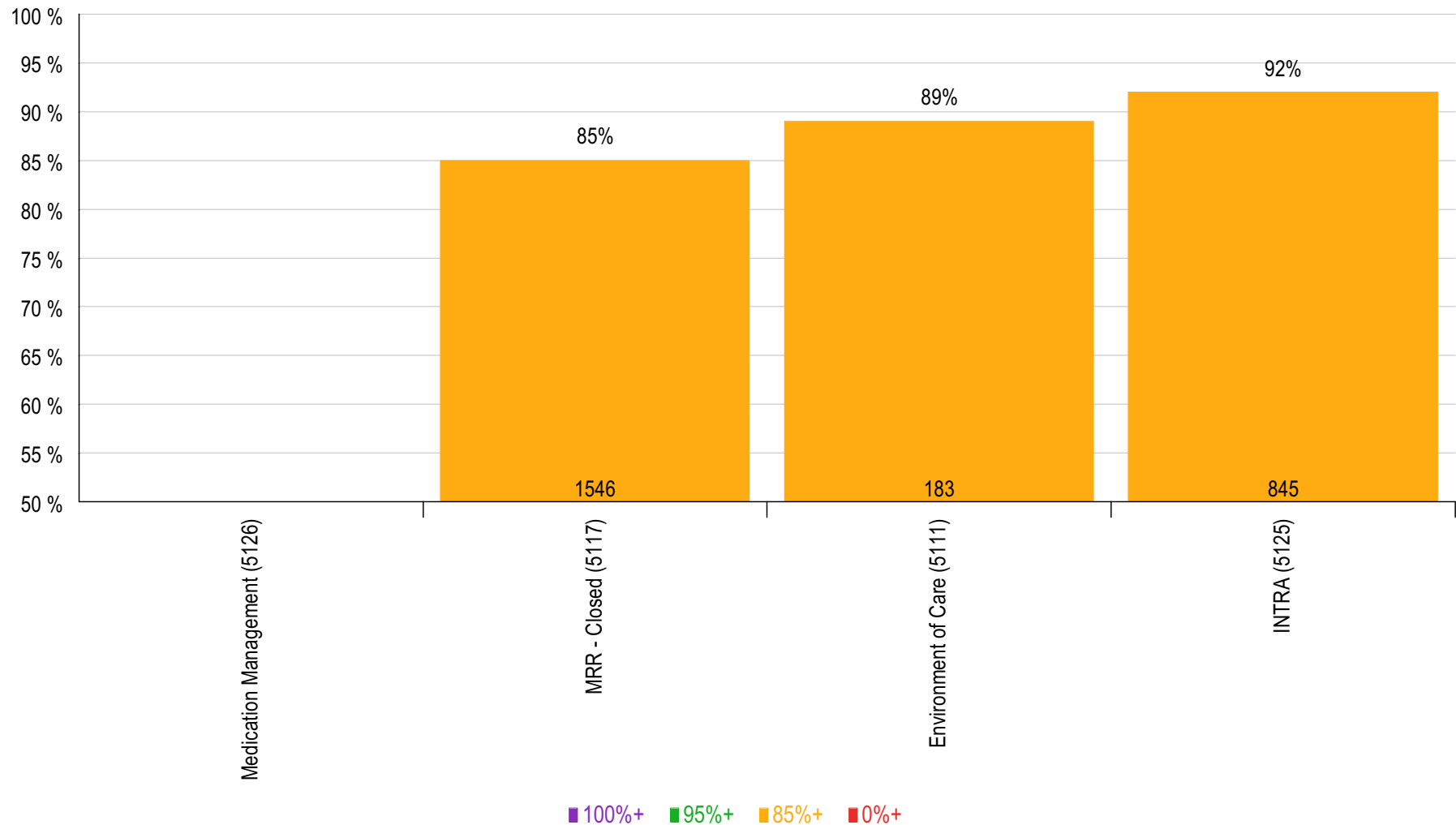
Incomplete Follow-Up Aging



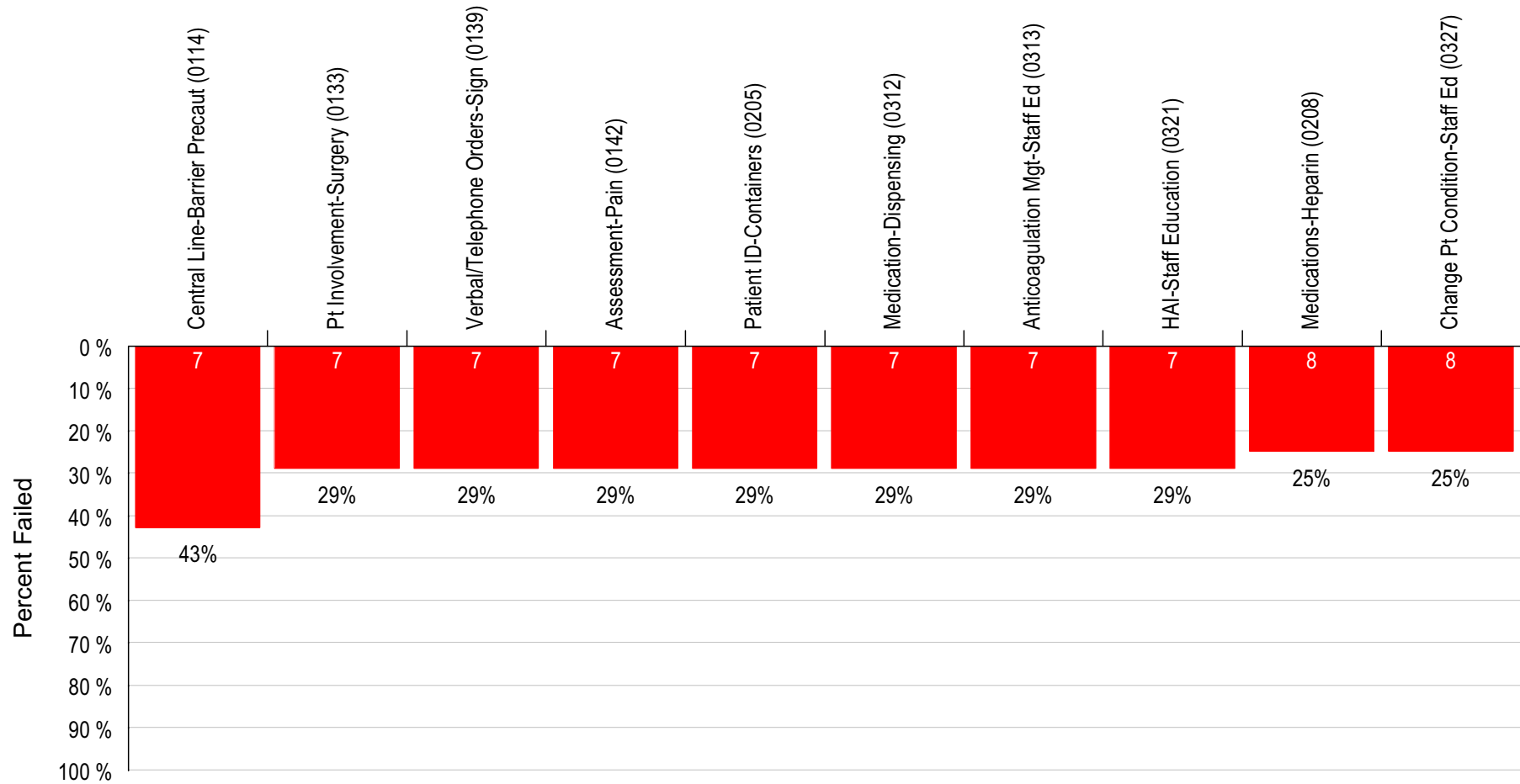
Question Response Statistics - 12 Month Trend



Rounds / Tracer Results - Last 12 Months 2 North (077) - December 2009 (Low to High Rank)



Top 10 Deficient Questions - Last 12 Months Apr/2009-Dec/2009 - 2 North



For Questions Occurring At Least 2 Times

Identifies top 10 failing questions for time period. Used to establish Performance Improvement priorities.
Graph Inverted to demonstrate failure with highest % failure rate on left.

Open Follow-Up Sent by Area Detail

Sample Hospital TJC (5110)

Sample Hospital TJC - Environment of Care (5111)

2 North (077)				Total Open	Current	30 Days	60 Days	90+ Days	Earliest
				9	0	0	0	9	02/13/2009
Survey ID	Area	Service	Inspection Date	Follow-Up Responsibility					
Item Inspected				Times Sent	Last Sent				
08 12 077 0101	2 North (077)	Department (002)	12/15/2008	Karen T	02/13/2009				
Authorized Identification (0101)									
Details: 12/15/2008 Fri Stephanie C: Two RN's wearing ID incorrectly									
Sent on 02/13/2009 to Karen T (karent@samplehospital.com)									
08 12 077 0107	2 North (077)	Department (002)	12/15/2008	Karen T	02/13/2009				
Power Strips - Walls (0107)									
Details: 12/15/2008 Fri Stephanie C: Rooms 203 & 204 need correcting									
Sent on 02/13/2009 to Karen T (karent@samplehospital.com)									
08 12 077 0111	2 North (077)	Department (002)	12/15/2008	Karen T	02/13/2009				
Electrical Cords - Gathered (0111)									
Details: 12/15/2008 Fri Stephanie C: Rooms 293 & 294 need correcting									
Sent on 02/13/2009 to Karen T (karent@samplehospital.com)									
08 12 077 0114	2 North (077)	Department (002)	12/15/2008	Karen T	02/13/2009				
Heavy Item Storage (0114)									
Details: 12/15/2008 Fri Stephanie C: Clean Utility Room 285 needs to be brought into compliance									
Sent on 02/13/2009 to Karen T (karent@samplehospital.com)									
08 12 077 0418	2 North (077)	Bio Med (005)	12/15/2008	Barbara L	02/13/2009				
Medical Gas/Vacuum Zone Valves (0418)									
Details: (No Details Provided)									
Sent on 02/13/2009 to Barbara L (barbaral@samplehospital.com)									
08 12 077 0708	2 North (077)	Department (002)	12/15/2008	Karen T	02/13/2009				
Crash Daily Checks (0708)									
Details: (No Details Provided)									
Sent on 02/13/2009 to Karen T (karent@samplehospital.com)									
08 12 077 0803	2 North (077)	Department (002)	12/15/2008	Karen T	02/13/2009				
Hand Hygiene Dispensers (0803)									
Details: (No Details Provided)									
Sent on 02/13/2009 to Karen T (karent@samplehospital.com)									
08 12 077 1001	2 North (077)	Department (002)	12/15/2008	Karen T	02/13/2009				
Adequate Storage Space for Patients (1001)									
Details: (No Details Provided)									
Sent on 02/13/2009 to Karen T (karent@samplehospital.com)									
08 12 077 1023	2 North (077)	Department (002)	12/15/2008	Karen T	02/13/2009				
Hand Washing Products (1023)									
Details: (No Details Provided)									
Sent on 02/13/2009 to Karen T (karent@samplehospital.com)									

Sample Hospital TJC - INTRA (5125)

2 North (077)				Total Open	Current	30 Days	60 Days	90+ Days	Earliest
				24	0	0	0	22	05/29/2009
Survey ID	Area	Service	Inspection Date	Follow-Up Responsibility					
Item Inspected				Times Sent	Last Sent				