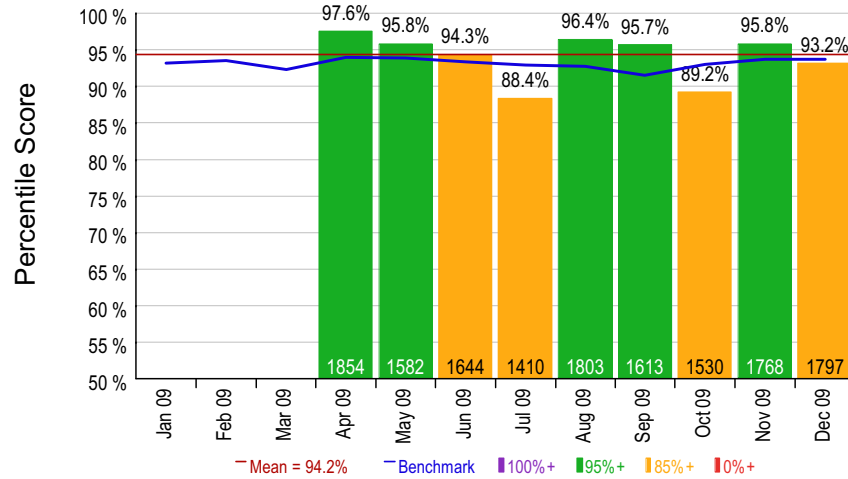


December 2009
Sample Hospital - INTRA (5125)

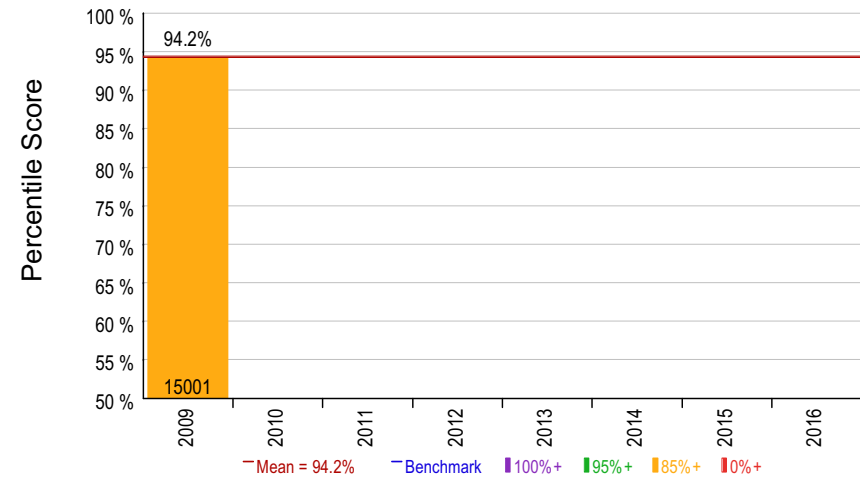


INTRA Patient Tracer & Quality Dashboard December 2009

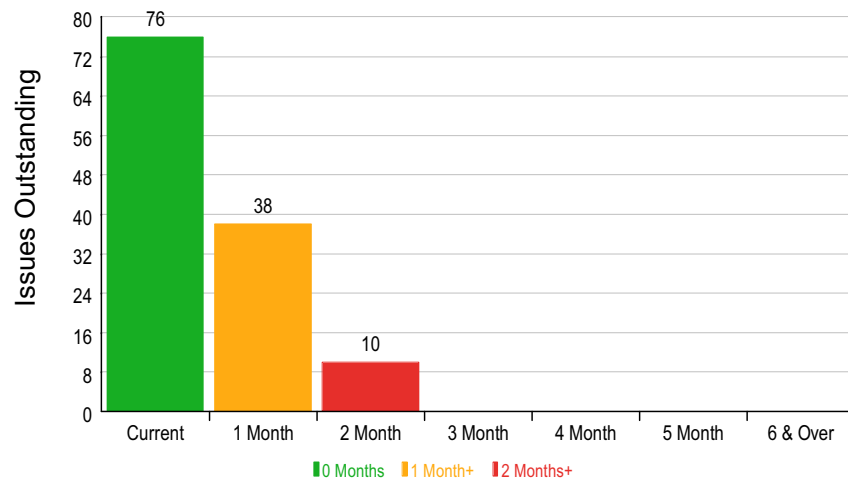
Overall Score - Monthly Trend



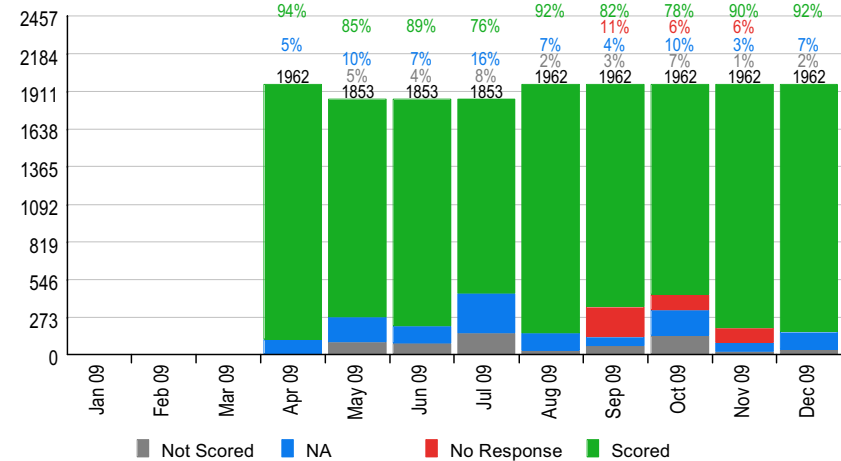
Overall Score - Annual Trend



Incomplete Follow-Up Aging



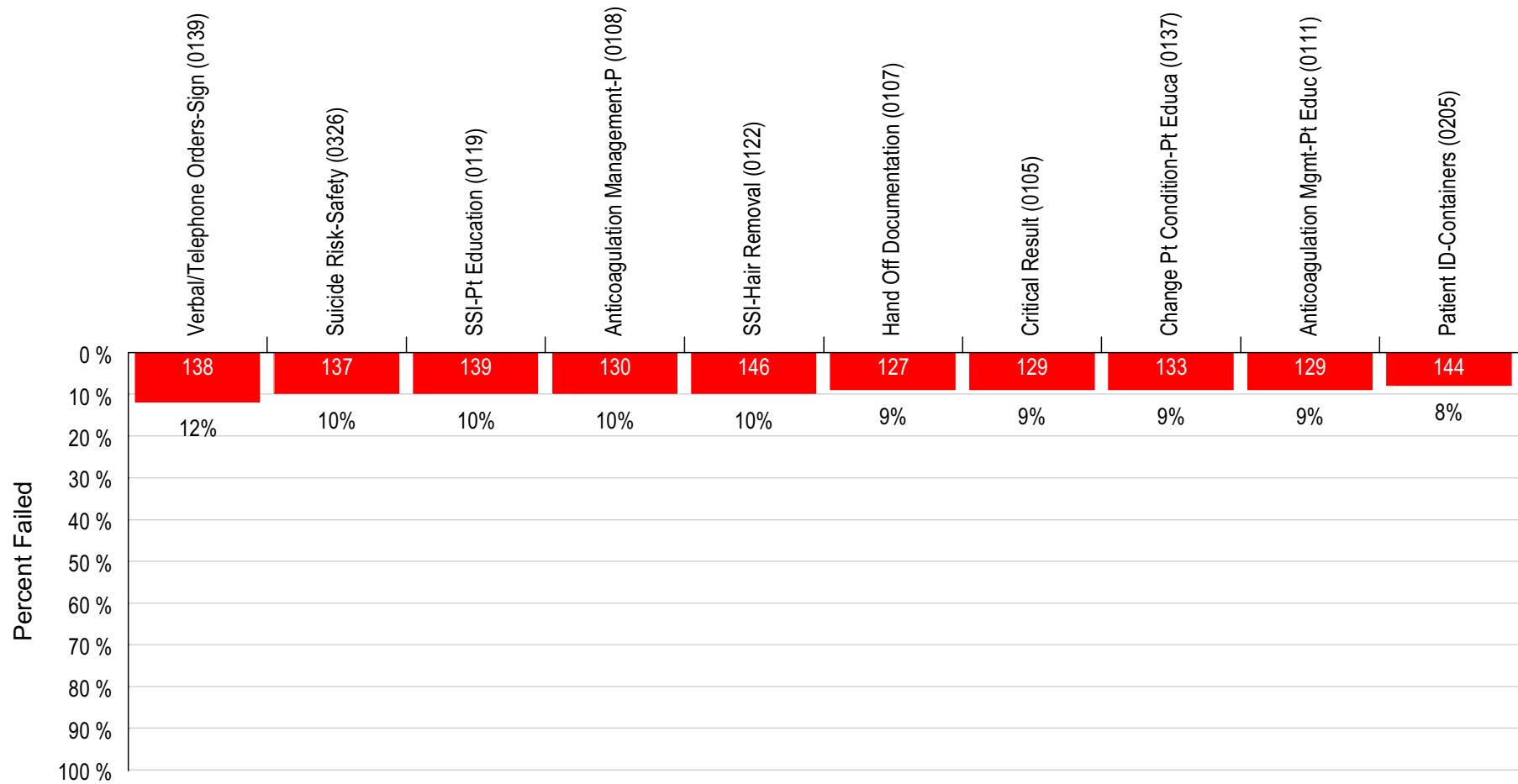
Question Response Statistics - 12 Month Trend



Values (n) on bottom of bar graphs = Total of questions scored
Not Scored or Not Applicable scoring is excluded from all performance calculation

Top 10 Deficient Questions INTRA - Last 12 Months

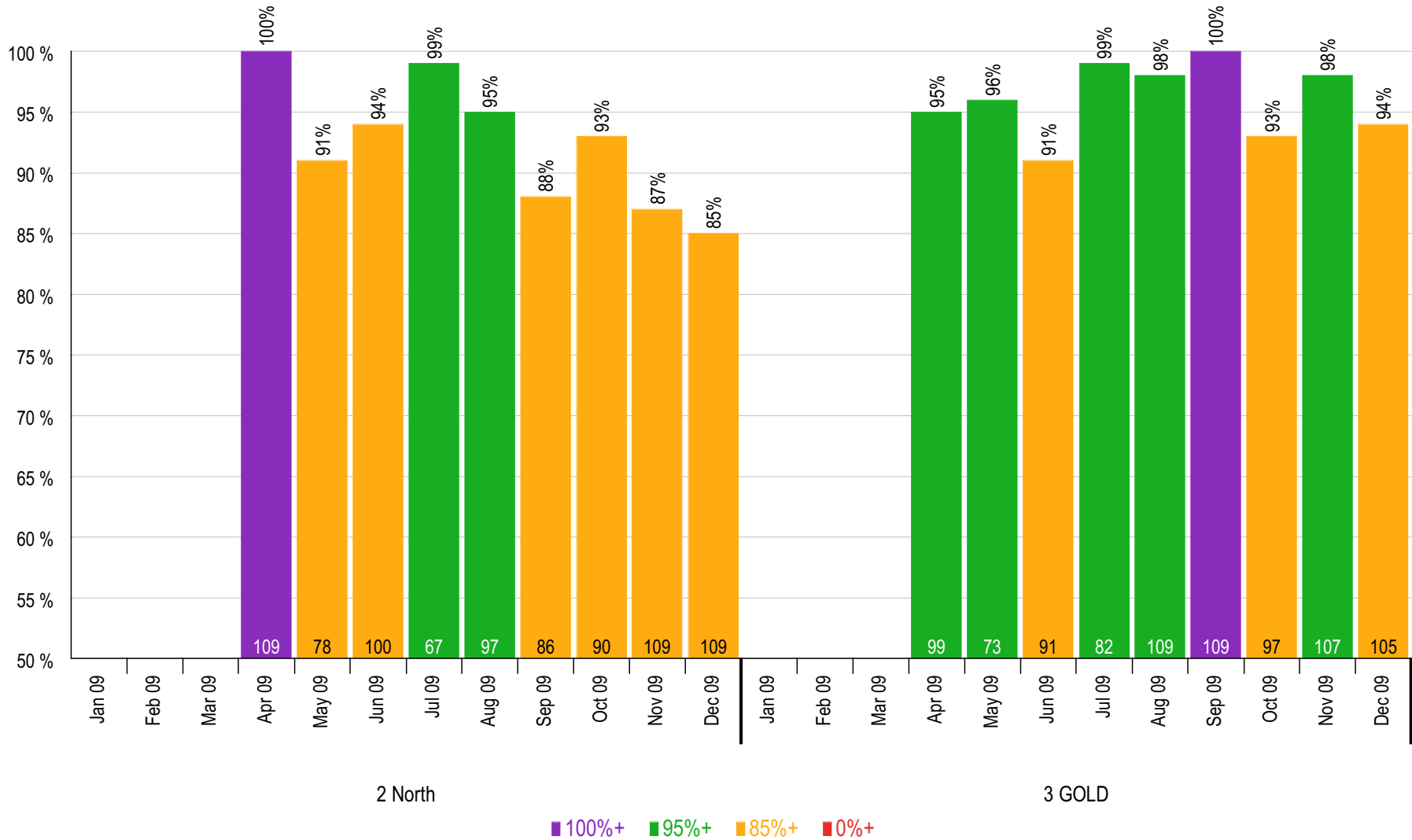
Apr/2009-Dec/2009



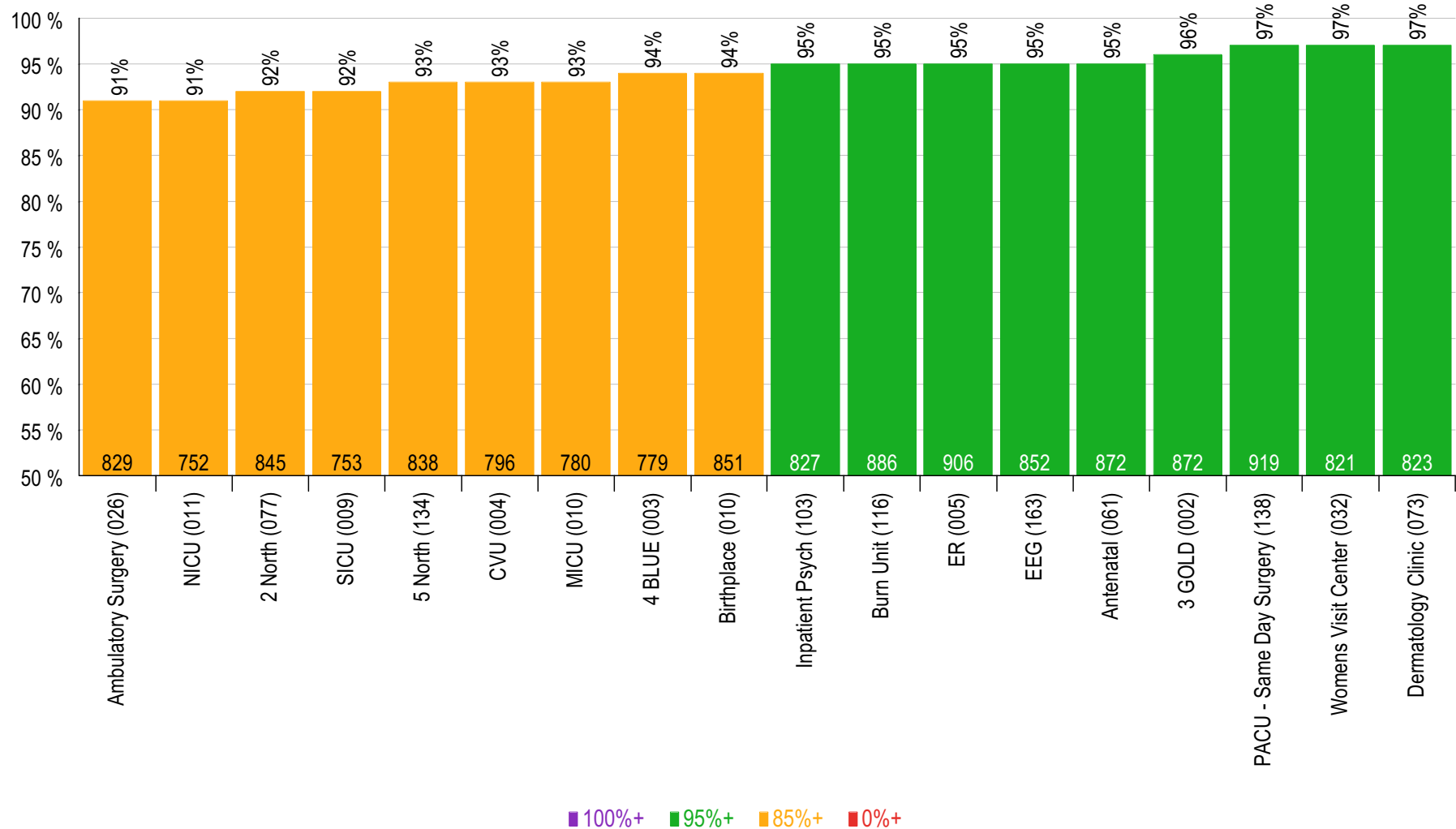
For Questions Occurring At Least 18 Times

Identifies top 10 failing questions for time period. Used to establish Performance Improvement priorities.
Graph Inverted to demonstrate failure with highest % failure rate on left.

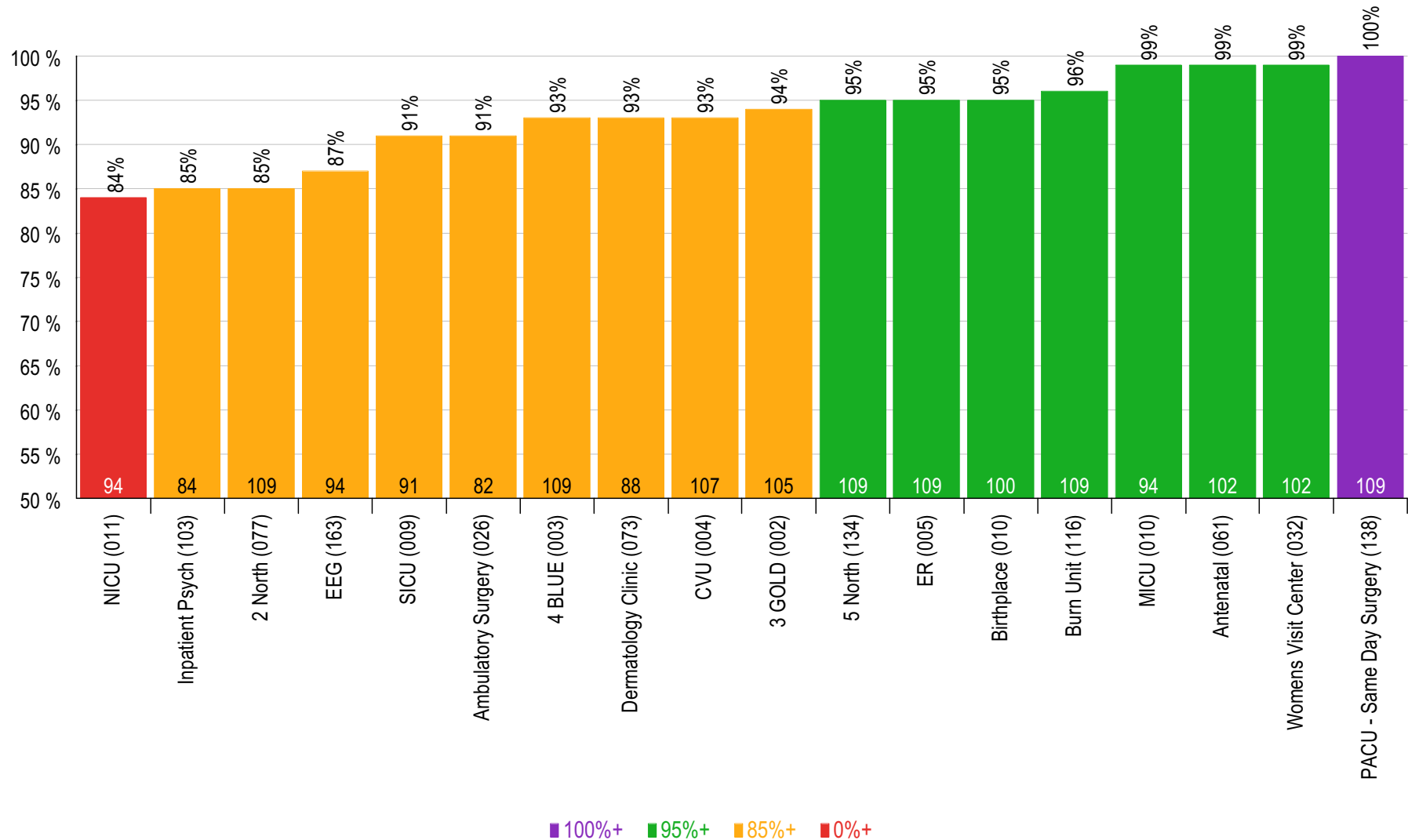
Score by Individual Area - 12 Month Trend December 2009



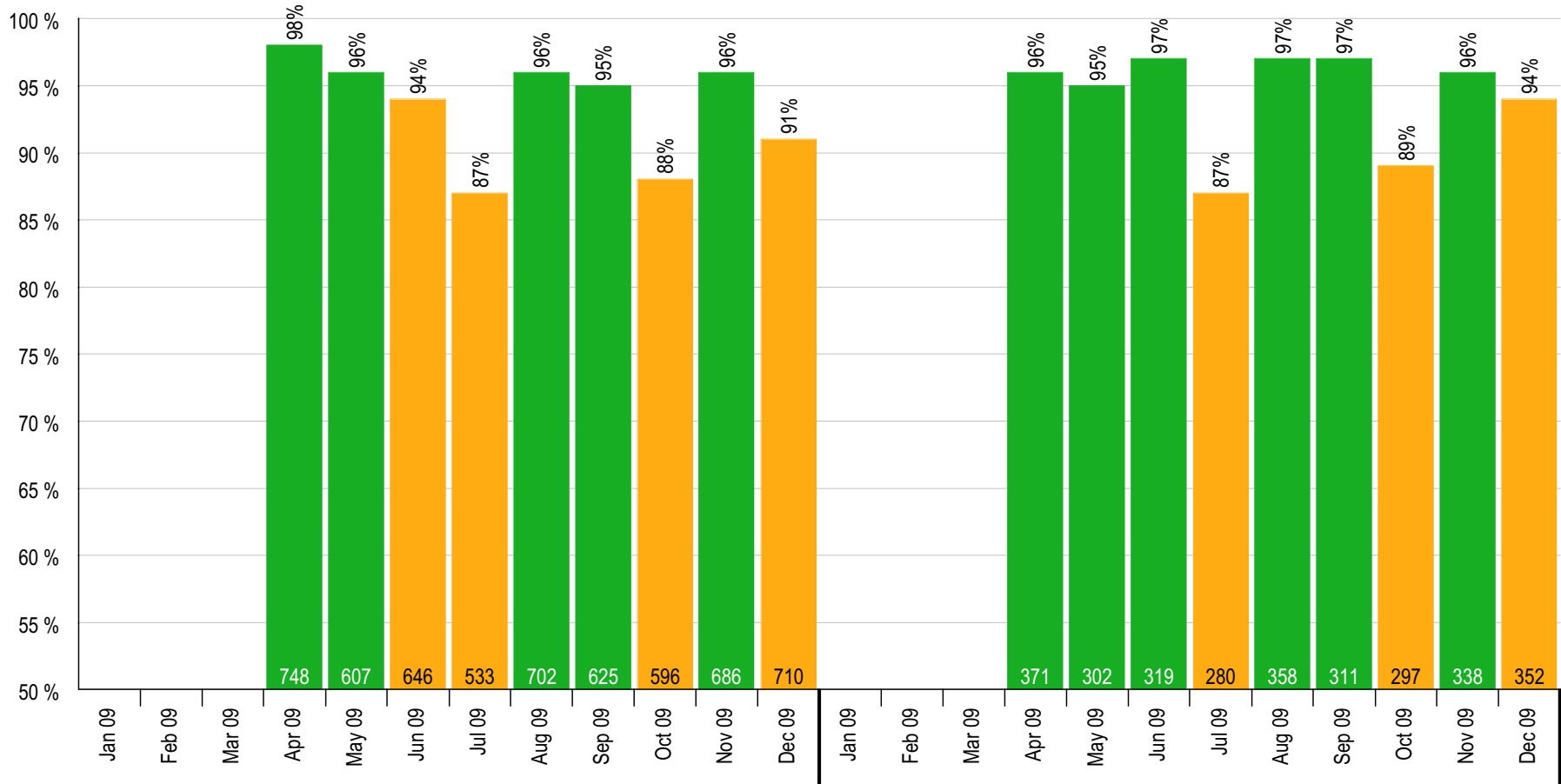
Score by Area INTRA - Last 12 Months Apr/2009-Dec/2009 (Low to High Rank)



Score all Areas - Current Month December 2009 (Low to High Rank)



Score by Category INTRA - 12 Month Trend December 2009



A. Chart Audit (01)

B. Observation (02)

■ 100%+ ■ 95%+ ■ 85%+ ■ 0%+

Category scores reflect the results of grouping similar questions