

# Facility Dashboard

- Board Overview of Patient Safety and Quality Performance;
- Key Performance Improvement Prioritization for Senior Management (Hospital Wide);
- Top 10 Deficiencies Immediate focus;
- Standards Performance at a glance “LIVE”.

Given consistent data  
Most people will take action

*The following pages are extracted as examples of dashboard capability.*

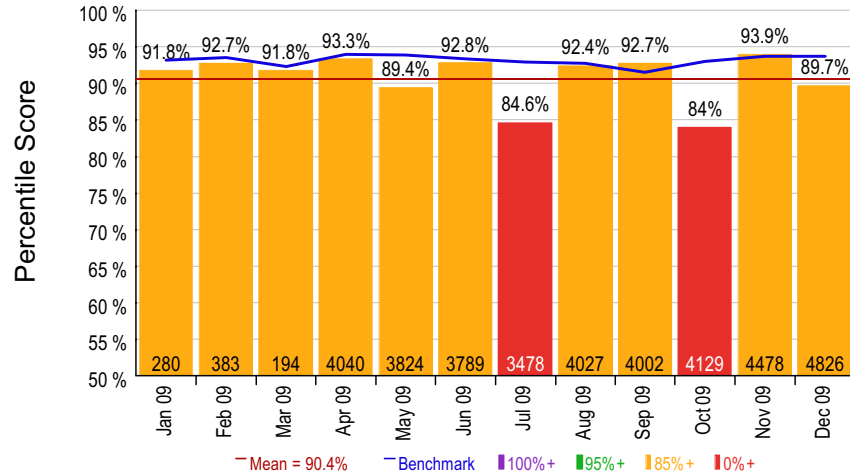


**December 2009**  
**Sample Hospital (5110)**

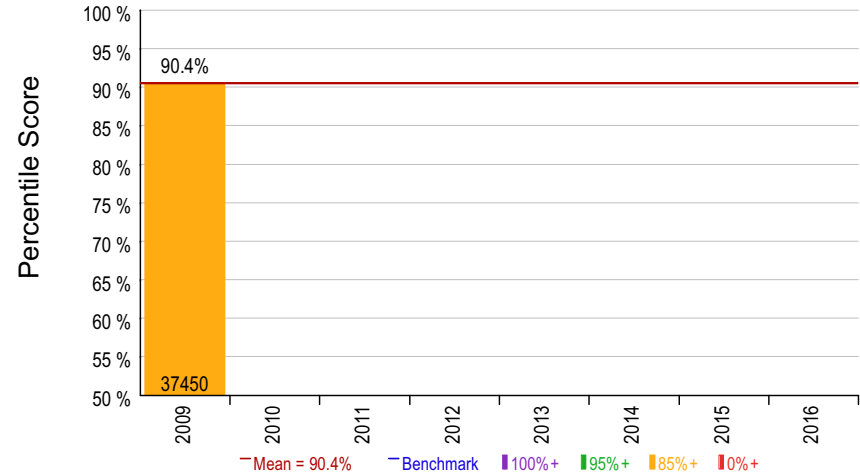


## Facility Summary December 2009

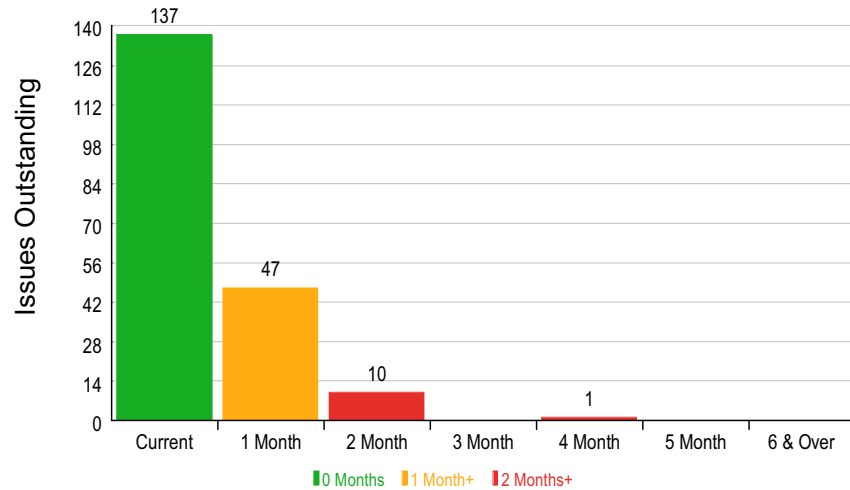
Overall Score - Monthly Trend



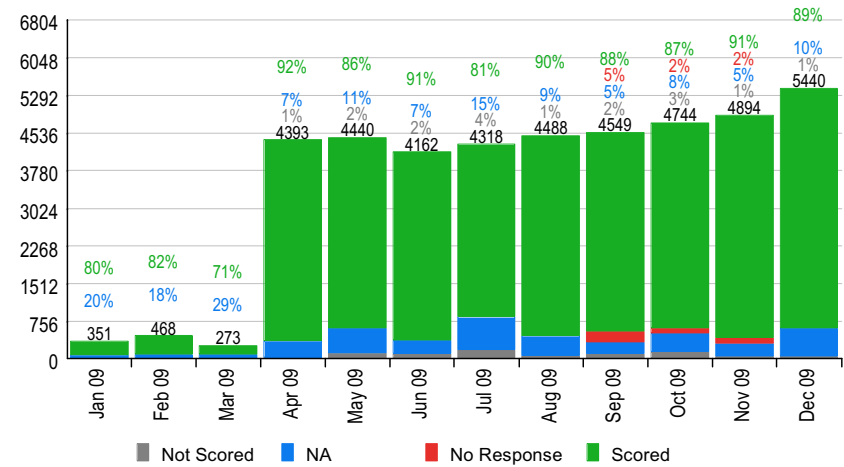
Overall Score - Annual Trend



Incomplete Follow-Up Aging

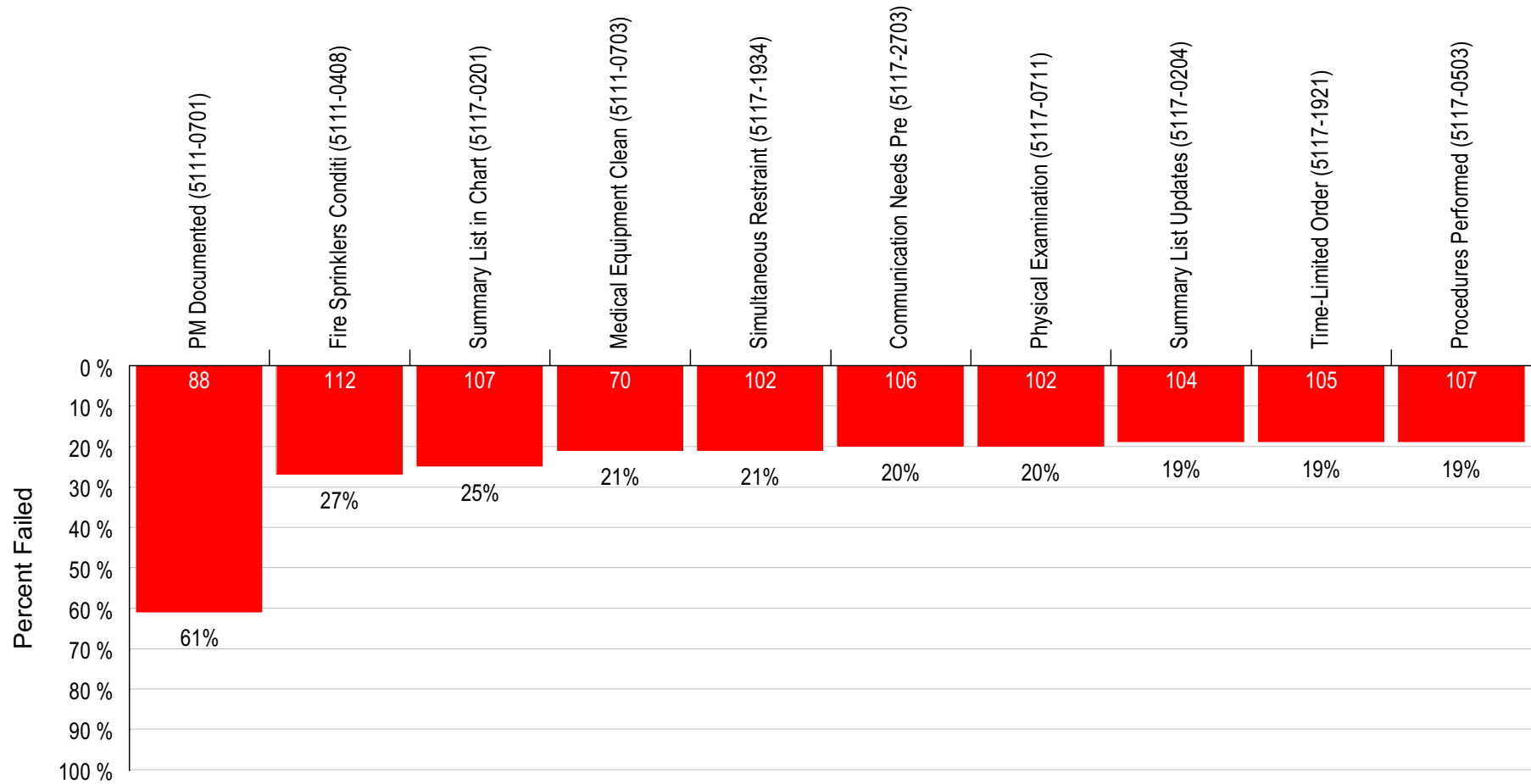


Question Response Statistics - 12 Month Trend



### Top 10 Deficient Questions - Last 12 Months

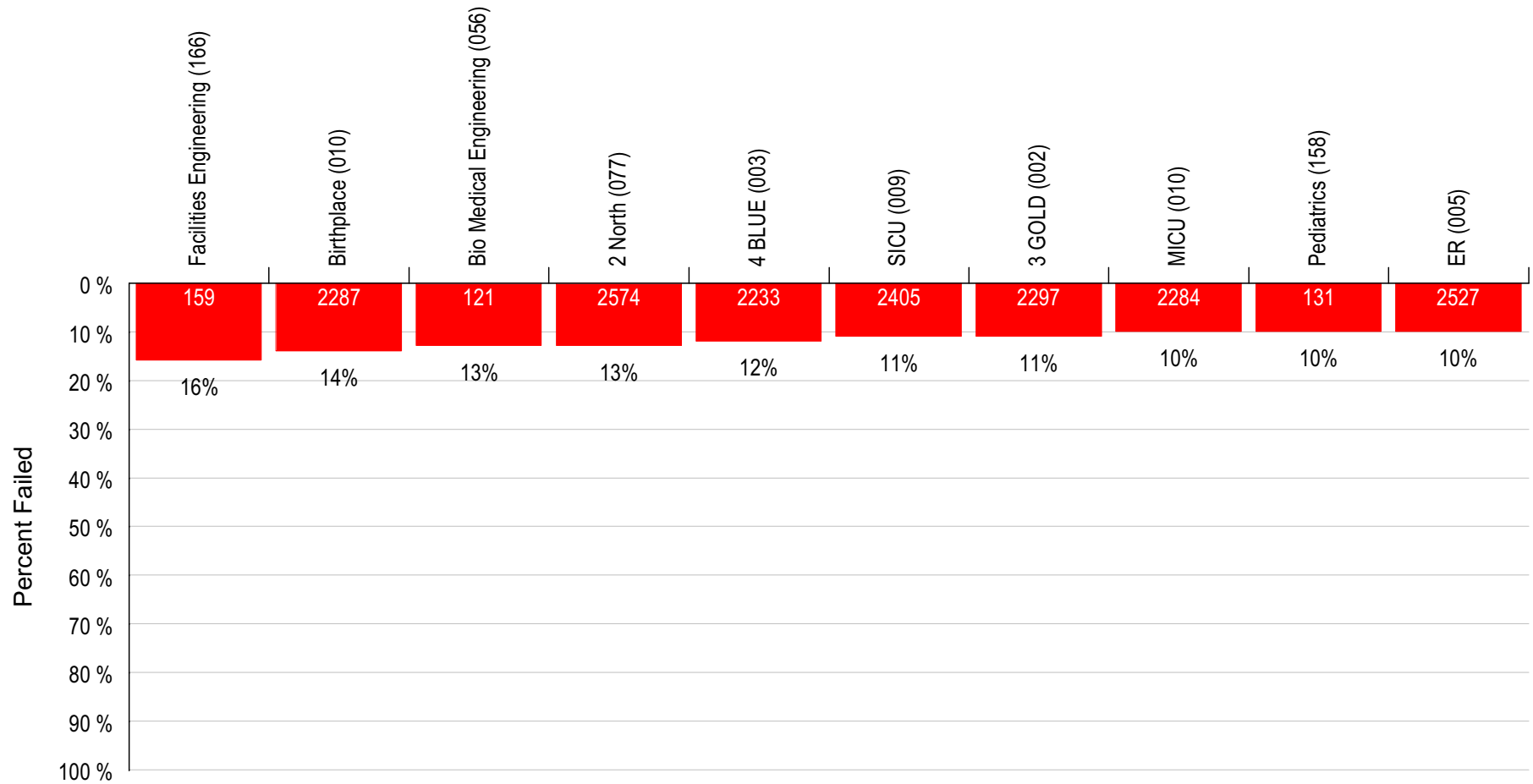
Jan/2009-Dec/2009



For Questions Occurring At Least 24 Times

Identifies top 10 failing questions for time period. Used to establish Performance Improvement priorities.  
Graph Inverted to demonstrate failure with highest % failure rate on left.

**Top 10 Deficient Areas - Last 12 Months All Tracers/ Rounding**  
 Jan/2009-Dec/2009



For Questions Occurring At Least 120 Times

Identifies top 10 failing areas for time period. Used to establish Performance Improvement priorities.  
 Graph Inverted to demonstrate failure with highest % failure rate on left.

### TJC Standards Based RFI Trend

