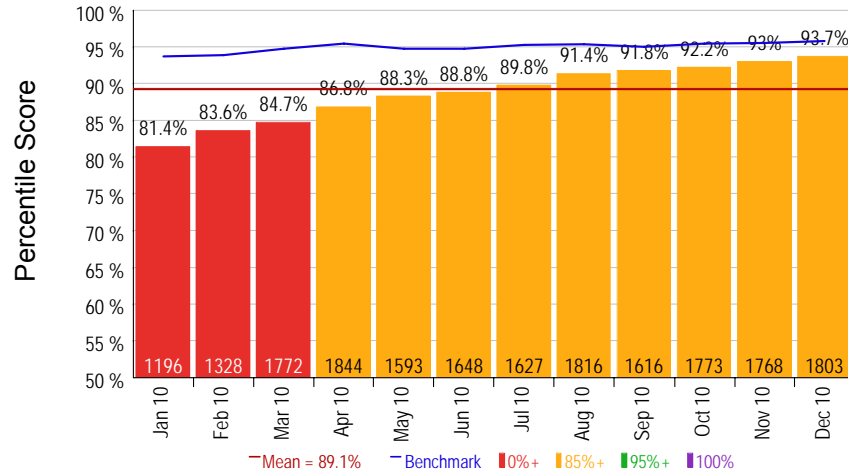


**December 2010**  
**Sample Hospital - INTRA (5125)**

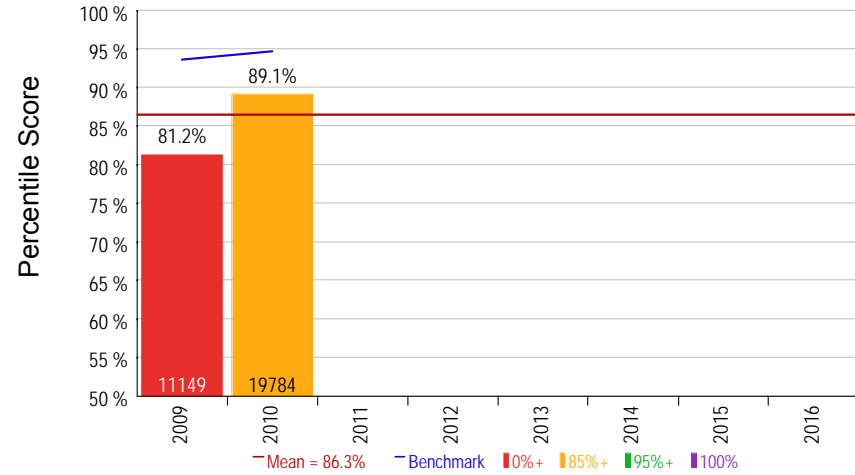


## Summary December 2010

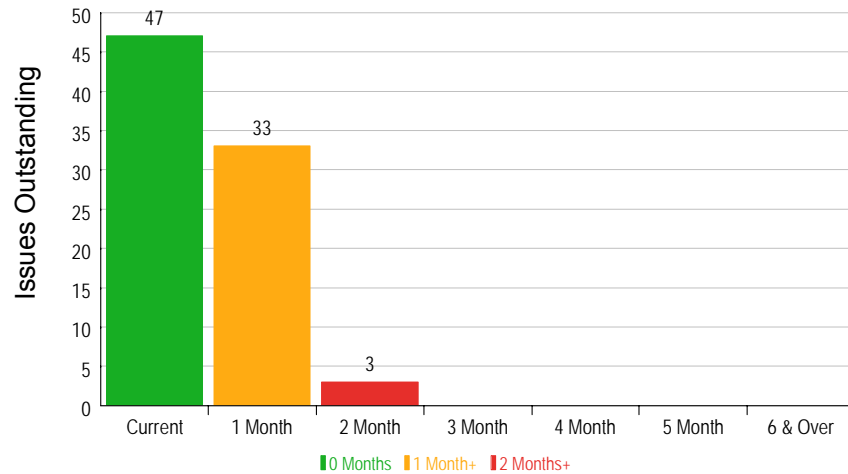
Overall Score - Monthly Trend



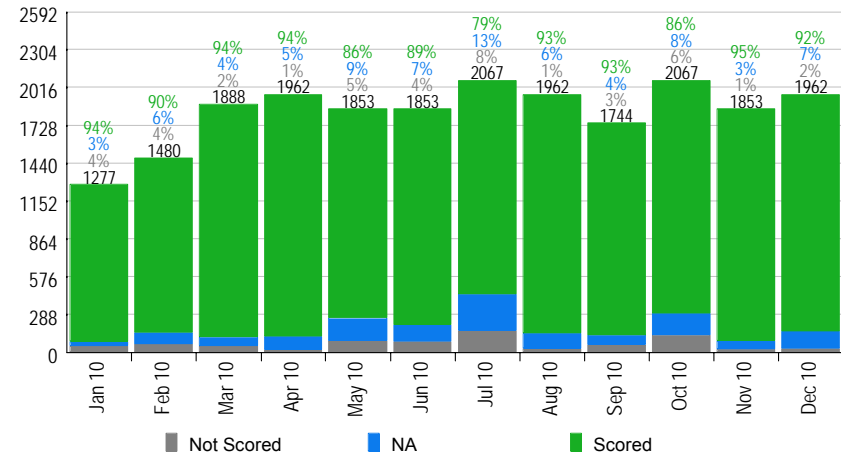
Overall Score - Annual Trend



Incomplete Follow-Up Aging



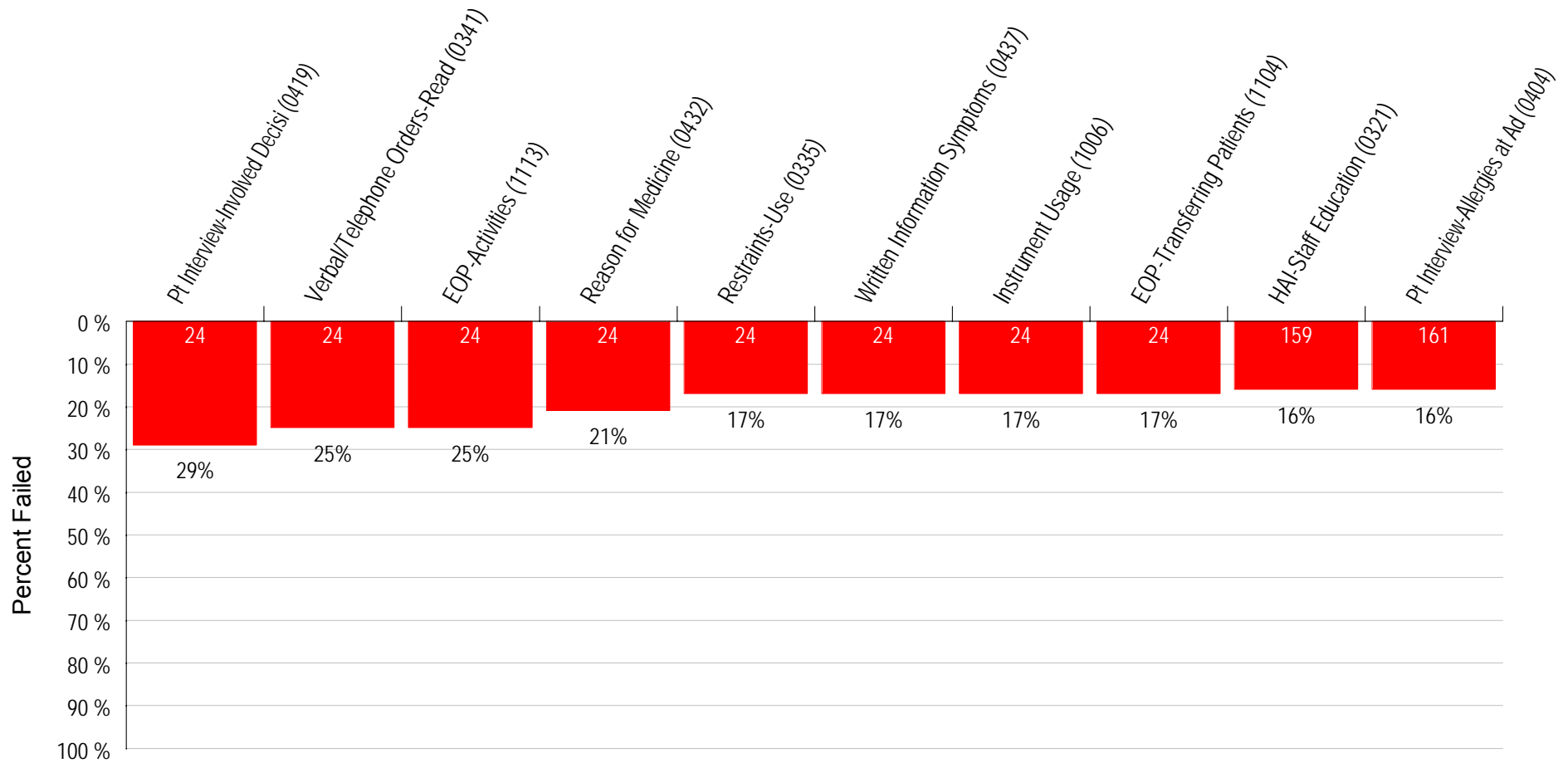
Question Response Statistics - 12 Month Trend



Values (n) on bottom of bar graphs = Total of questions scored  
Not Scored or Not Applicable scoring is excluded from all performance calculation

### Top 10 Failing Questions - Last 12 Months

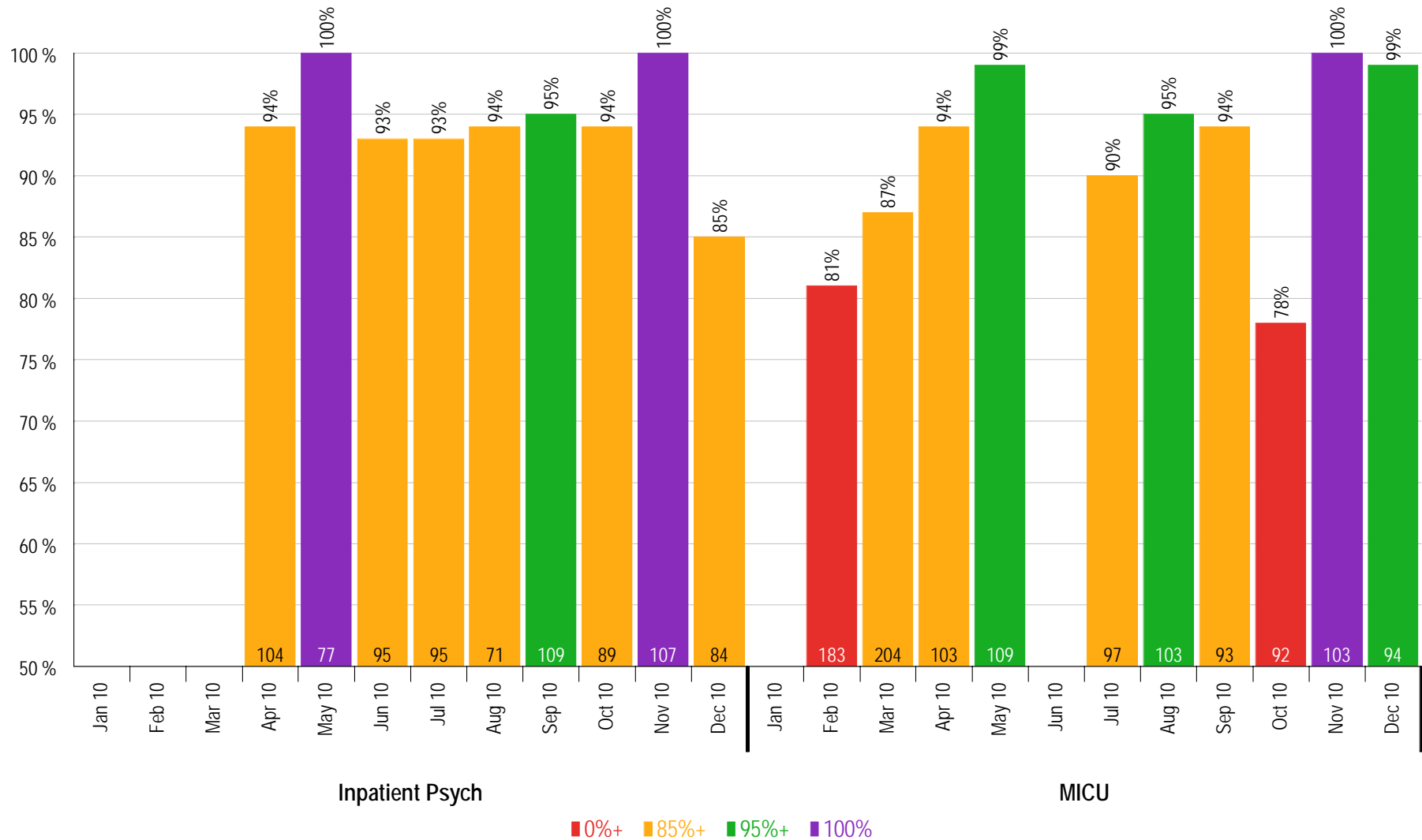
Jan/2010-Dec/2010



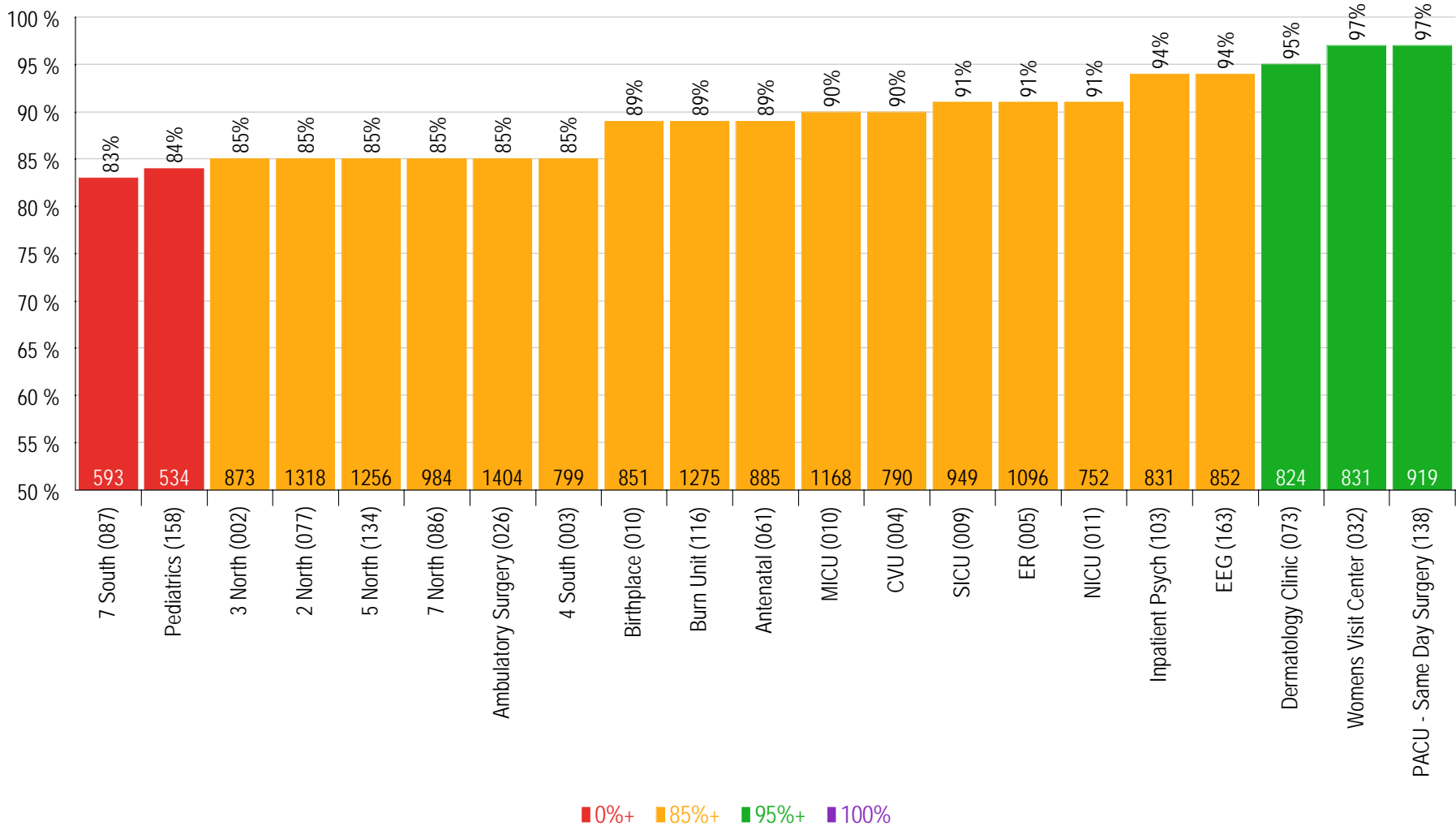
For Questions Occurring At Least 24 Times

Identifies top 10 failing questions for time period. Used to establish Performance Improvement priorities.  
Graph Inverted to demonstrate failure with highest % failure rate on left.

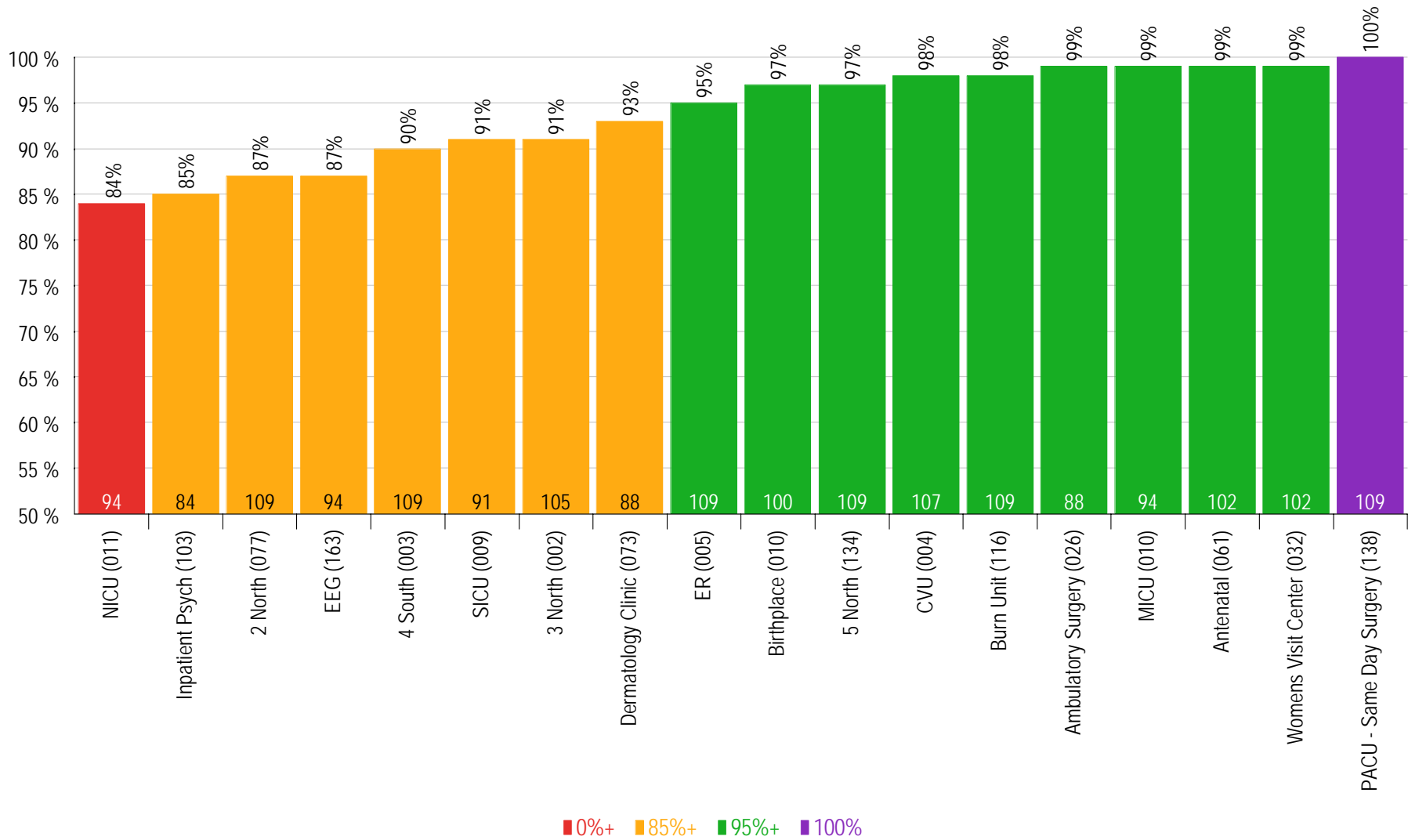
### Score by Individual Area - 12 Month Trend December 2010



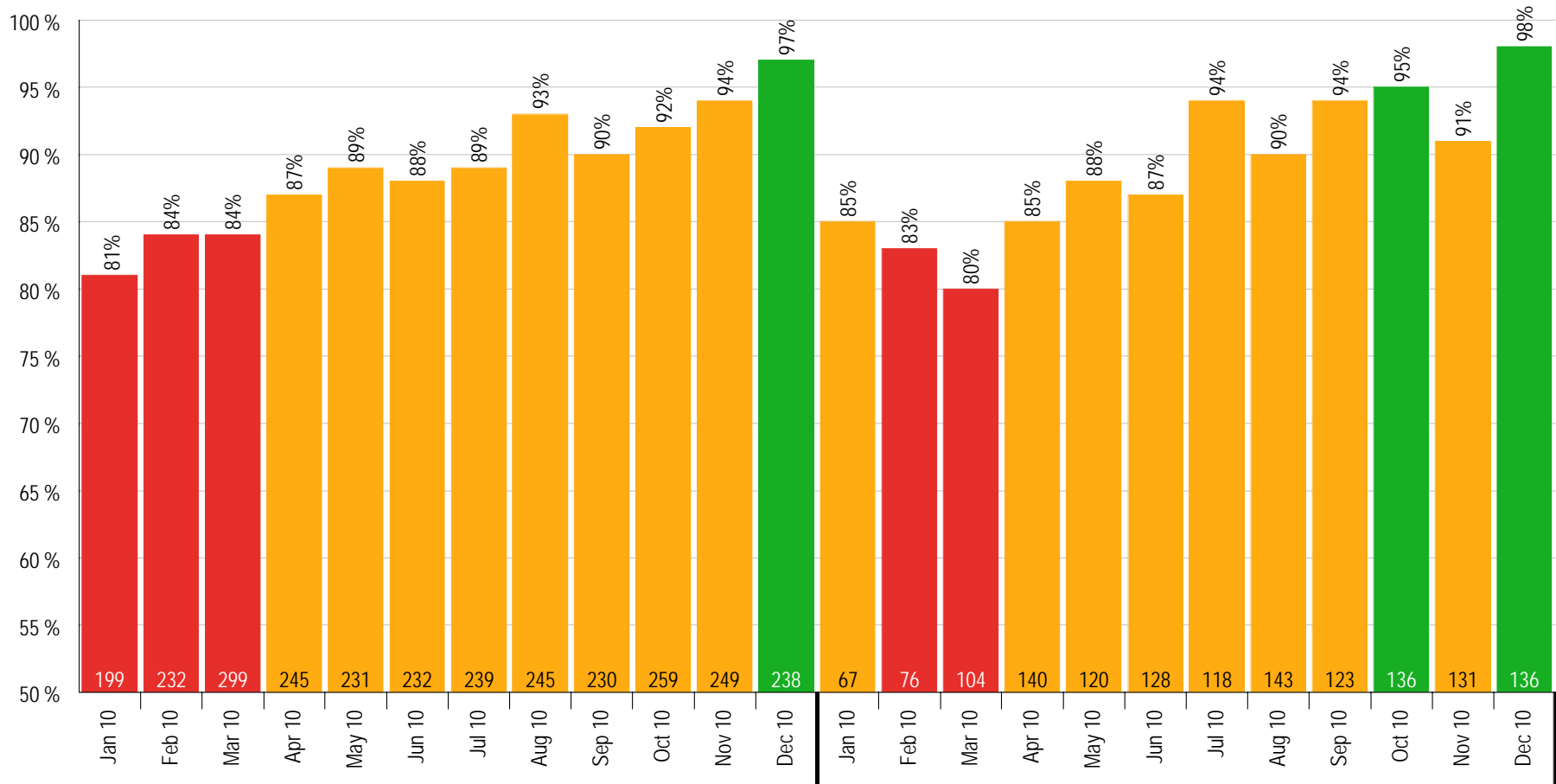
### Score all Areas - Last 12 Months (Cumm) Jan/2010-Dec/2010 (Low to High Rank)



### Score all Areas - Current Month December 2010 (Low to High Rank)



### Score by Category - 12 Month Trend December 2010



D. Patient Interview (04)

E1. Universal Prtcl-All (05)

■ 0%+ ■ 85%+ ■ 95%+ ■ 100%

Category scores reflect the results of grouping similar questions